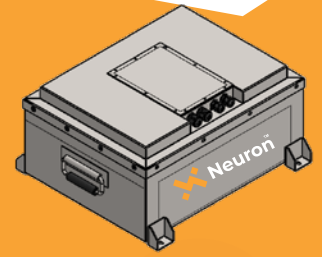


LFP
CHEMISTRY
LITHIUM
BATTERY

DATA SHEET

NE 3W 5186AL**51.2V 86AH**

WARRANTY
36
MONTHS

GENERAL CHARACTERISTICS

Nominal Voltage (V)	51.2
Capacity (Ah)	86.0
Energy (kWh)	4.40
No. of cell in series	16
No. of cell in parallel	1
Total No. of cell	16
Cell Type	Prismatic
Chemistry	Li-FePO4

ELECTRICAL CHARACTERISTICS

Maximum cut-off voltage (V)	57.6
Minimum cut-off voltage (V)	44.0
Charging Voltage (V)	56.8
Charging Mode	CCCV
Recommended charging current (A)	20.0
Maximum charging current (A)	25.0
Maximum continuous discharging current (A)	43.0
Cell Discharging Protection level (V)	2.70
Cell charging protection level (V)	3.65
Balancing current (mA)	50
Cycle Life	2000+
DOD Level (%)	90%

PROTECTIONS

Cell under voltage protection	Yes
Cell over voltage Protection	Yes
Over Current Protection	Yes
Short circuit protection	Yes
Temperature protection	Yes

TEMPERATURE CHARACTERISTICS

Working Temperature (°C)	-10°C – 60°C
Storage Temperature (°C)	0°C - 45°C

COMMUNICATION

CAN based Telematics System	Optional
UART Communication	Yes
CAN Protocol for communication with charger	Optional

OTHERS

Length * width * height (L*W*H)	(480±5) * (370±5) * (235±5) mm
Power Connector for Discharging	SB-120(Anderson)
Power Connector for Charging	SB-50(Anderson)
Charging Connector length	500±5 mm
Weight of Battery	47± 2 Kg

SAFETY AND WARNINGS

Maintenance should be carried out by the experienced professionals and aware of the preventive measures on the potential harm of the battery.

Do not use or storage the battery near to the high temperature source.

Do not touch the battery with wet hands.

System shall not be placed in direct sunshine or close to heat source.

Heavy weight shall not be placed on any cable.

Do not damage the connector or wire of battery.

Do not short circuit the battery.

Do not expose the battery to moisture or liquid.

Do not use liquid or other objects placed into the battery system.

Do not open or cut the battery, not to hit, throw or step on the battery.

Do not connect the positive and negative terminal of battery.

Do not cut the wire or connector of battery.

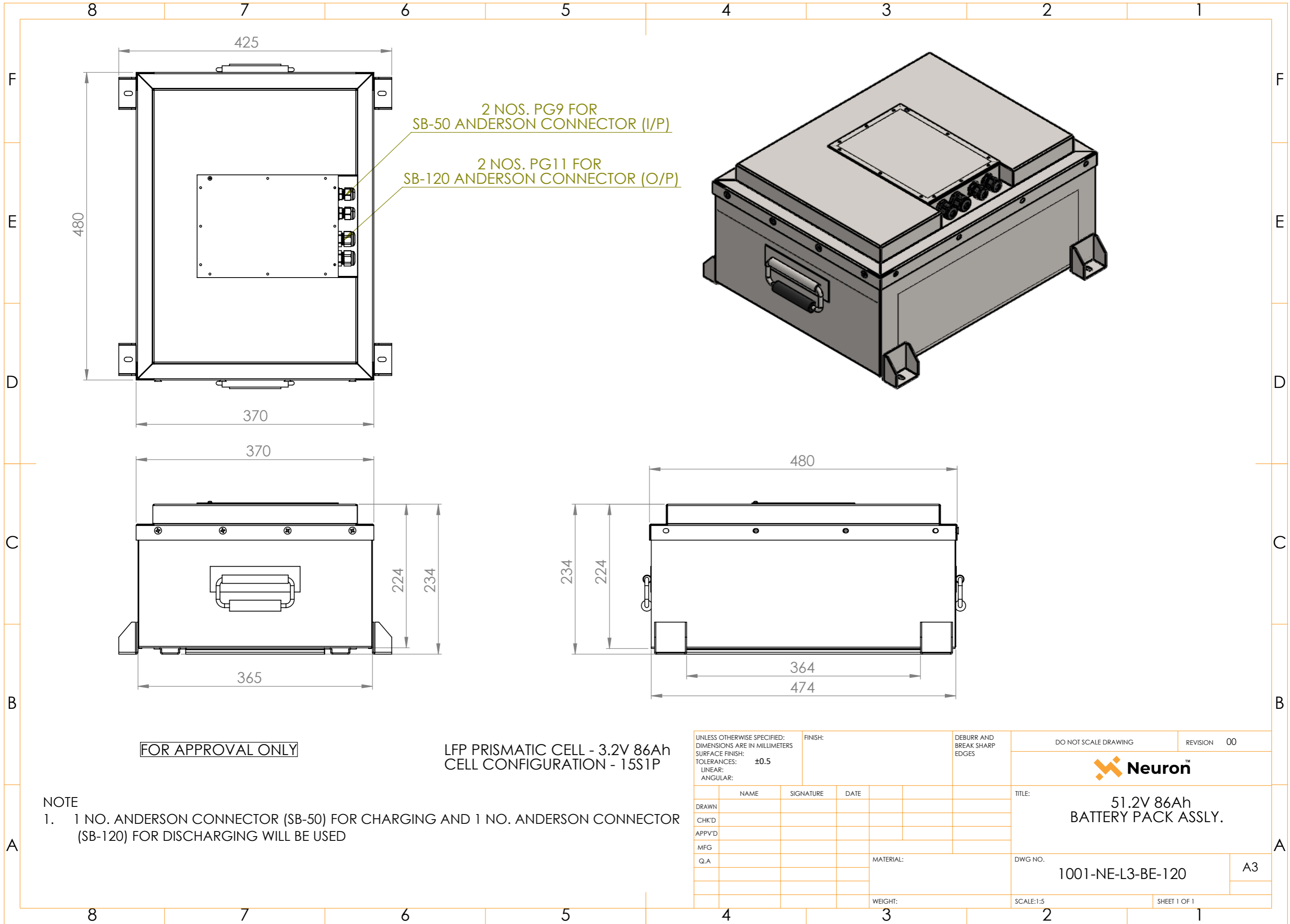
Damping of the battery is prohibited.

Do not directly contact with the leaking battery.

NEURON ENERGY

OFFICE : 505, SAI HERITAGE, TILAK ROAD, GHATKOPAR (E), MUMBAI - 400 077

BRANCH : DELHI | MUMBAI | CHENNAI | VARANASI | KOLKATA | TOLL FREE NUMBER : 1800-102-2139 | EMAIL : SALES@NEURONENERGY.IN



2 NOS. PG9 FOR SB-50 ANDERSON CONNECTOR (I/P)

2 NOS. PG11 FOR SB-120 ANDERSON CONNECTOR (O/P)

FOR APPROVAL ONLY

LFP PRISMATIC CELL - 3.2V 86Ah
CELL CONFIGURATION - 15S1P

NOTE
1. 1 NO. ANDERSON CONNECTOR (SB-50) FOR CHARGING AND 1 NO. ANDERSON CONNECTOR (SB-120) FOR DISCHARGING WILL BE USED

UNLESS OTHERWISE SPECIFIED: DIMENSIONS ARE IN MILLIMETERS SURFACE FINISH: TOLERANCES: ±0.5 LINEAR: ANGULAR:		FINISH:	DEBURR AND BREAK SHARP EDGES	DO NOT SCALE DRAWING	REVISION 00
				Neuron™	
				TITLE: 51.2V 86Ah BATTERY PACK ASSLY.	
DRAWN		SIGNATURE		DWG NO. 1001-NE-L3-BE-120	
CHK'D		DATE		A3	
APP'VD				SCALE:1:5	
MFG		MATERIAL:		SHEET 1 OF 1	
Q.A		WEIGHT:			